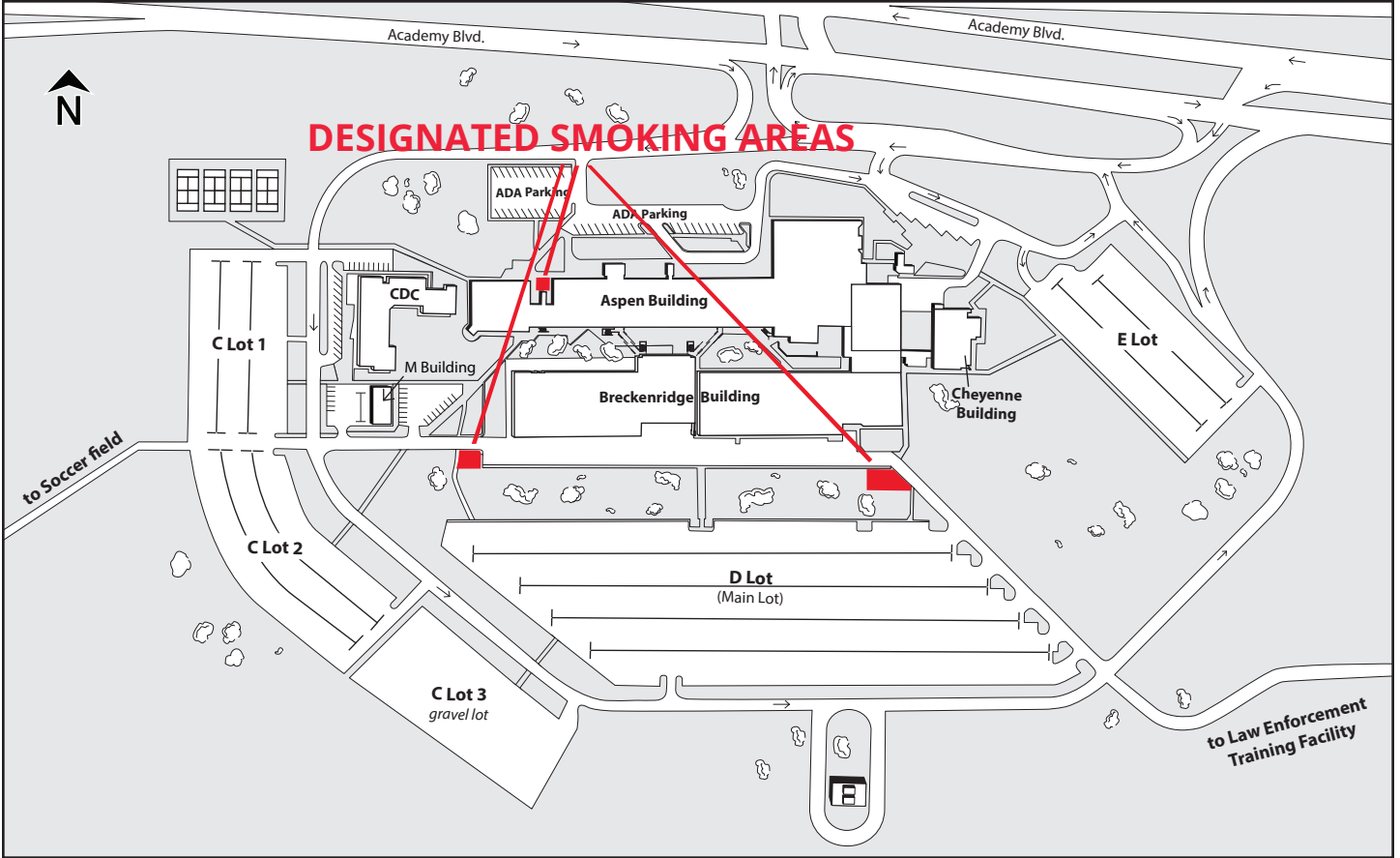


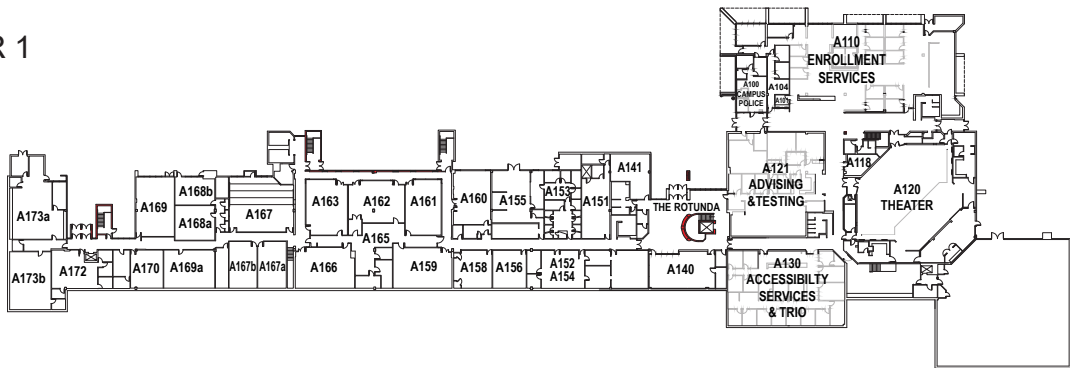


CENTENNIAL CAMPUS MAP

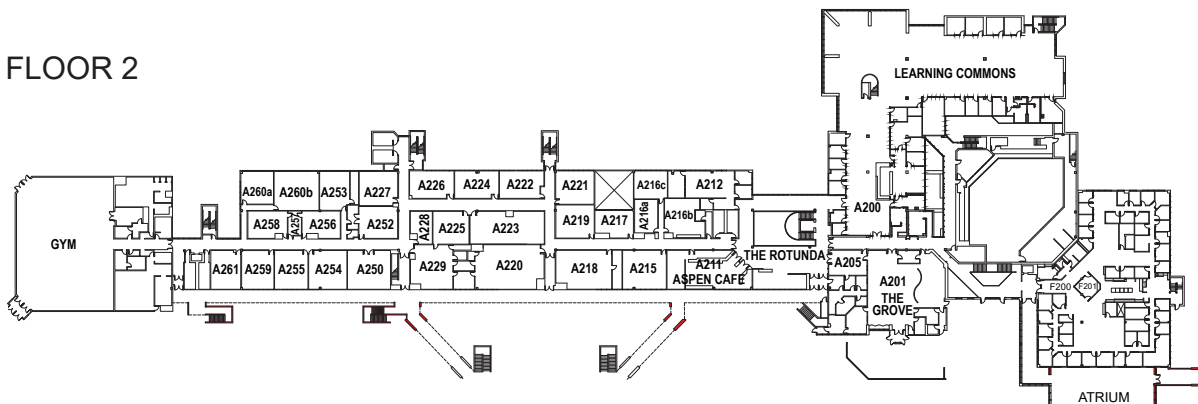


ASPEN BUILDING

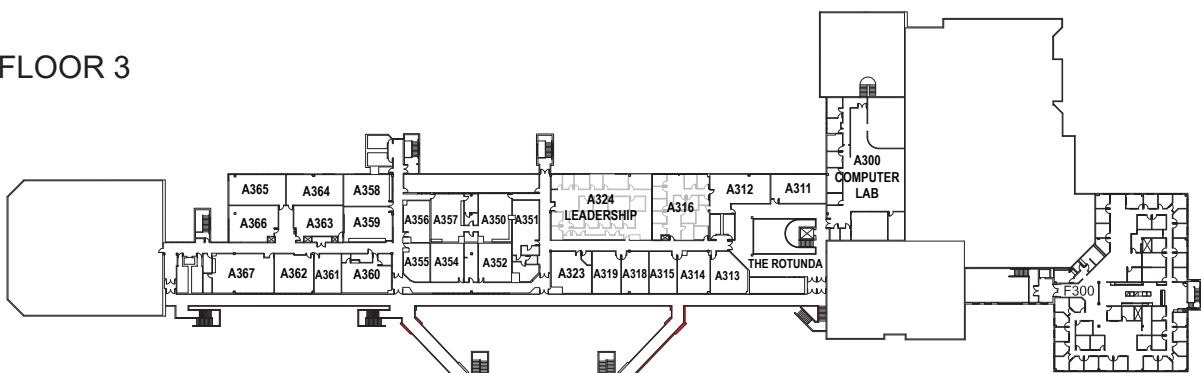
FLOOR 1



FLOOR 2



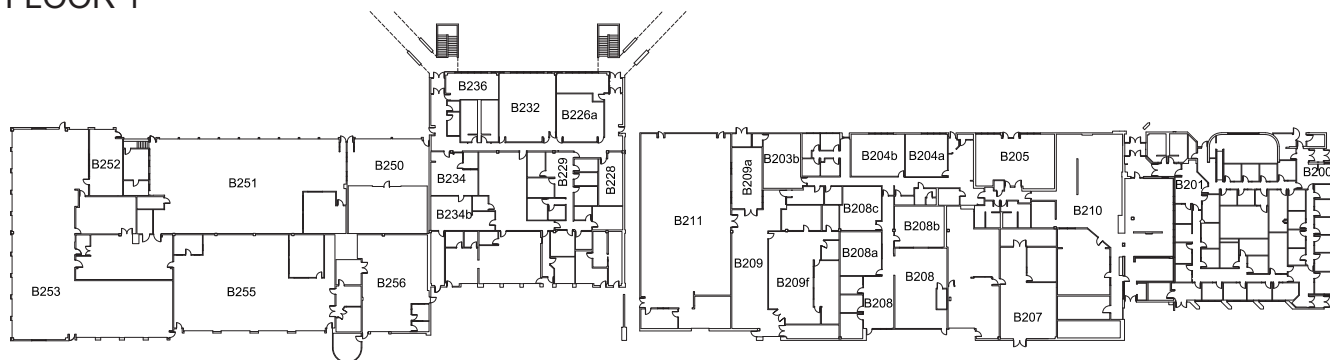
FLOOR 3



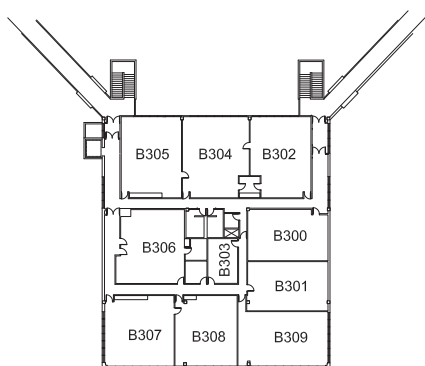


BRECKENRIDGE BUILDING

FLOOR 1

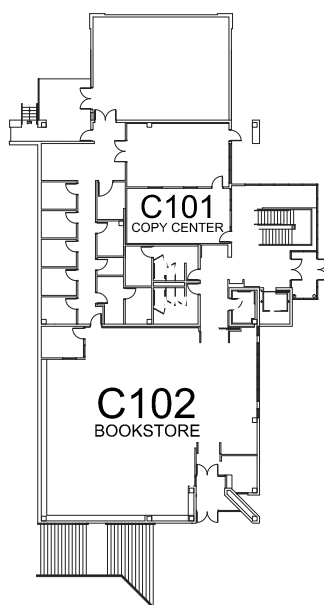


FLOOR 2

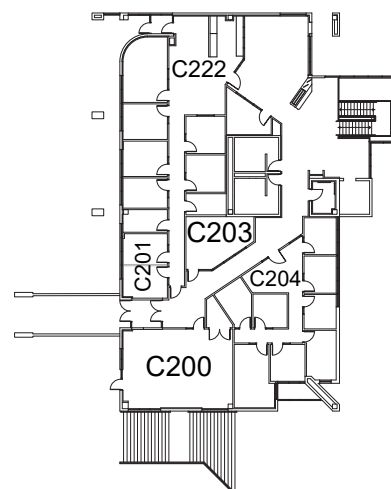


CHEYENNE BUILDING

FLOOR 1



FLOOR 2



DIRECTORY

A = Aspen Building	100 level = 1st floor
B = Breckenridge Building	200 level = 2nd floor
C = Cheyenne Building	300 level = 3rd floor
F = Faculty Building	
CDC = Child Development Center	

Student Services:

ACCESSibility & TRIO.....	A-130
Advising & Testing.....	A-121
Aspen Market Cafe	A-211
Bookstore.....	C-102
Campus Police.....	A-100
Cashier	A-101
Centennial State Conference Room	C-200
Computer Labs.....	A-300
Copy Center	C-101
Counseling Center	C-201b
eLearning	A-229

Enrollment Services

• Enrollment	A-110
• Financial Aid	
• Records	
• Recruitment	
• Student Accounts	
Fitness Center.....	A-262
The Grove.....	A-201
High School Programs.....	A-220
The Hub.....	C-203
Learning Commons	A-200
Military & Veterans Programs	C-222
Pikes Peak Conference Room.....	A-140
Student Government.....	A-204
Student Life.....	A-205

Student Success Center..... A-316

- Career and Retention Services
- Center for Diversity, Equity and Inclusion
- COSI Coaches
- Dakota Promise Coaches
- High Impact Practices

Testing Center

.....	A-121
Theater	A-120
Veterans Affairs / Veterans Upward Bound	C-222
Workforce Development.....	A-223

Instructional Divisions:

Business, Public Service, & Social Sciences.....	F-300
Communication, Humanities, & Technical Studies	F-300
Health & Sciences	F-300
Math & English	F-200
English Language Institute.....	F-200

Support Services:

Facilities.....	B-229
Human Resource Services	B-200
ITSS B-201	
Leadership Suite	A-324
President's Office	A-324
Procurement (Purchasing).....	B-229