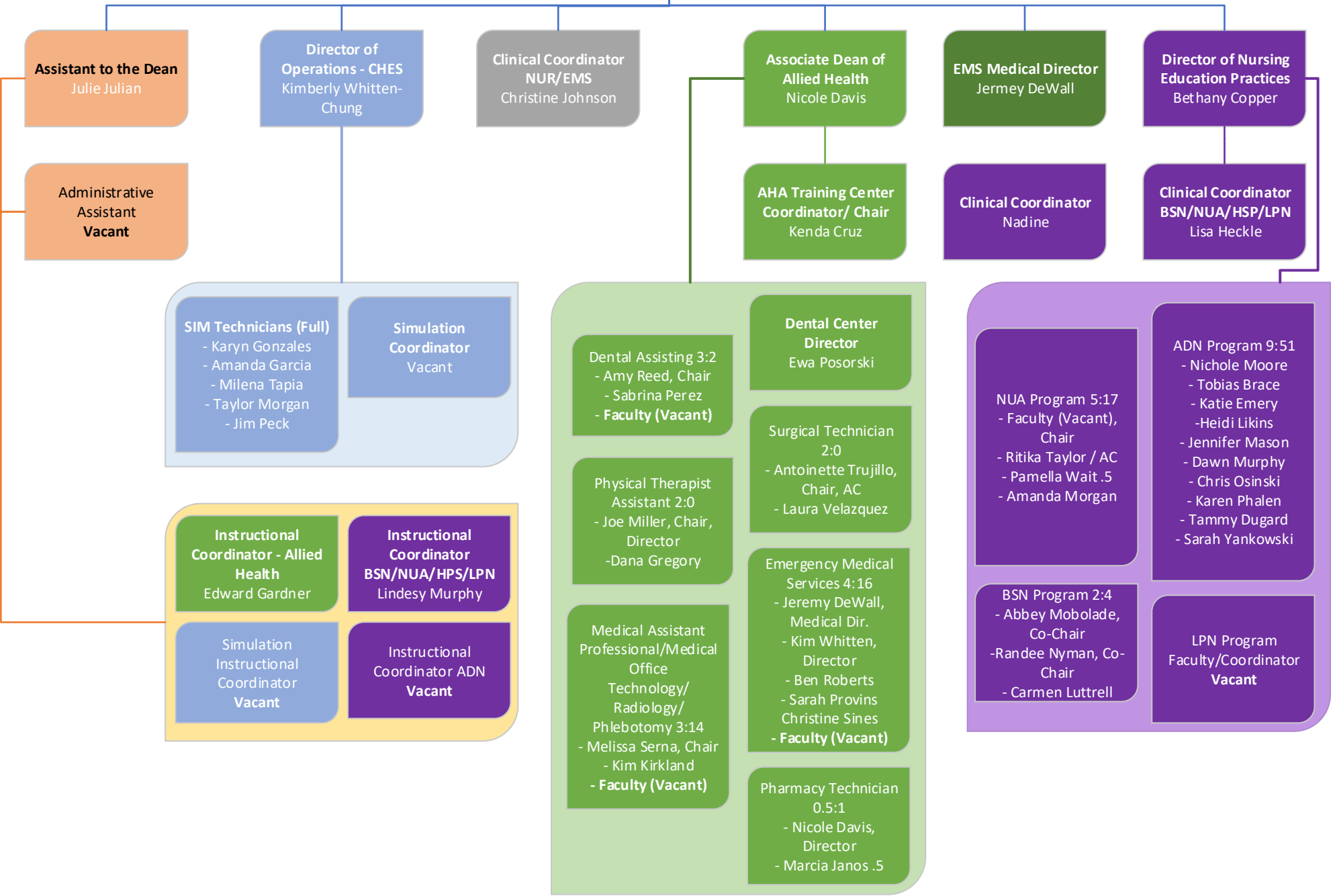


**Health Sciences Division**  
Updated: 10/25/2023

**(Interim) Executive Dean of Health Sciences**  
Nicole Davis



**Assistant to the Dean**  
Julie Julian

**Administrative Assistant**  
Vacant

**Director of Operations - CHES**  
Kimberly Whitten-Chung

**Clinical Coordinator NUR/EMS**  
Christine Johnson

**Associate Dean of Allied Health**  
Nicole Davis

**EMS Medical Director**  
Jerme DeWall

**Director of Nursing Education Practices**  
Bethany Copper

**SIM Technicians (Full)**  
- Karyn Gonzales  
- Amanda Garcia  
- Milena Tapia  
- Taylor Morgan  
- Jim Peck

**Simulation Coordinator**  
Vacant

**Instructional Coordinator - Allied Health**  
Edward Gardner

**Instructional Coordinator BSN/NUA/HPS/LPN**  
Lindesy Murphy

**Simulation Instructional Coordinator**  
Vacant

**Instructional Coordinator ADN**  
Vacant

**Dental Assisting 3:2**  
- Amy Reed, Chair  
- Sabrina Perez  
- Faculty (Vacant)

**Physical Therapist Assistant 2:0**  
- Joe Miller, Chair, Director  
- Dana Gregory

**Medical Assistant Professional/Medical Office Technology/Radiology/Phlebotomy 3:14**  
- Melissa Serna, Chair  
- Kim Kirkland  
- Faculty (Vacant)

**Dental Center Director**  
Ewa Posorski

**Surgical Technician 2:0**  
- Antoinette Trujillo, Chair, AC  
- Laura Velazquez

**Emergency Medical Services 4:16**  
- Jeremy DeWall, Medical Dir.  
- Kim Whitten, Director  
- Ben Roberts  
- Sarah Provins  
- Christine Sines  
- Faculty (Vacant)

**Pharmacy Technician 0.5:1**  
- Nicole Davis, Director  
- Marcia Janos .5

**Clinical Coordinator**  
Nadine

**Clinical Coordinator BSN/NUA/HSP/LPN**  
Lisa Heckle

**NUA Program 5:17**  
- Faculty (Vacant), Chair  
- Ritika Taylor / AC  
- Pamella Wait .5  
- Amanda Morgan

**ADN Program 9:51**  
- Nichole Moore  
- Tobias Brace  
- Katie Emery  
- Heidi Likins  
- Jennifer Mason  
- Dawn Murphy  
- Chris Osinski  
- Karen Phalen  
- Tammy Dugard  
- Sarah Yankowski

**BSN Program 2:4**  
- Abbey Mobolade, Co-Chair  
- Rande Nyman, Co-Chair  
- Carmen Luttrell

**LPN Program Faculty/Coordinator**  
Vacant