

President's Address

PROFESSIONAL DEVELOPMENT WEEK | FALL 2016



Focus Goals

UPDATE

Focus Goals

UPDATE

- Began process in summer preceding the 12/13 AY
- Two year process (or more)

Integrate data to drive better decision making.

- Assessment Methodologies
 - Adopted new assessment model - Feb. 2015
 - Established Assessment Committee - May 2015
 - Conducted Collective review - summer 2015
- Ad Astra
 - Events Management
 - » Available for fall semester
 - » Submission form upgraded
 - Scheduling
 - » Available for spring 2016 semester
 - » FLAC/Scheduling Team working on preferences with chairs

Two key strategies:

1. Continue work to improve student persistence.
 2. Develop a strategic and interwoven recruiting, marketing, and student onboarding plan.
- **Objective #1: Stop the enrollment decline.**



Enrollment

Enrollment

UPDATE

	10/11	11/12	12/13	13/14	14/15	15/16
FTE	10,826	10,546	10,407	10,013	9,555	9,140
Unduplicated	22,456	21,794	21,938	20,962	19,961	19,021

Enrollment

UPDATE

Fall 2016 Current Enrollment

FTE

-1.4%

HEADCOUNT

-1.7%

Enrollment Process Improvement

- ✓ Team Effort – Using, recognizing and honoring the deep knowledge, experience, skills, and talents of our PCC team.
- ✓ Redesigned Help Desk
- ✓ Express registration
- ✓ Group advising
- ✓ ACT prospective student lists
- ✓ Continual communication with prospective students
- ✓ Improved forms and put them online
- ✓ Focused communications for ongoing student scholarship funding
- ✓ Opt-In for developmental education courses
- ✓ Remote proctoring for CCPT
- ✓ Re-scripted “steps to enrollment”
- ✓ Better tracking and data usage – Institutional Effectiveness
- ✓ Cross-training for staff
- ✓ College-wide working group to continue improvements in student launches
- ✓ Streamlined access to registration and residency processes

Education Advisory Board (EAB)

- Navigate is a tool that will help students identify which programs and degrees are best fits for them.
- Complements other software we currently use.
- Eventually, Navigate will also help students create their long term schedule of classes that aligns with their academic plan.
- Slated for roll out in Fall 2016



Assessment & Accreditation

Assessment

UPDATE

- Instructional services (70 departments)
- Significant progress has been made
- All departments collected assessment data in AY15/16 as planned
- 20 reports have been submitted and reviewed by the coaches (the remaining reports are due in fall 2016)
- 4 assessment workshops (How do I make my data speak?) will be offered during PDW to help departments analyze and report assessment results
- Four D2L shells (one for each division) have been created to serve as repositories of final documents
- An Assessment LibGuide has been created to keep departments informed of upcoming deadlines and training opportunities
- **A whole day Workshop is scheduled (Sept. 30)** to help non-CTE disciplines assess general education outcomes this fall (using the revised Pathways competencies)

Accreditation

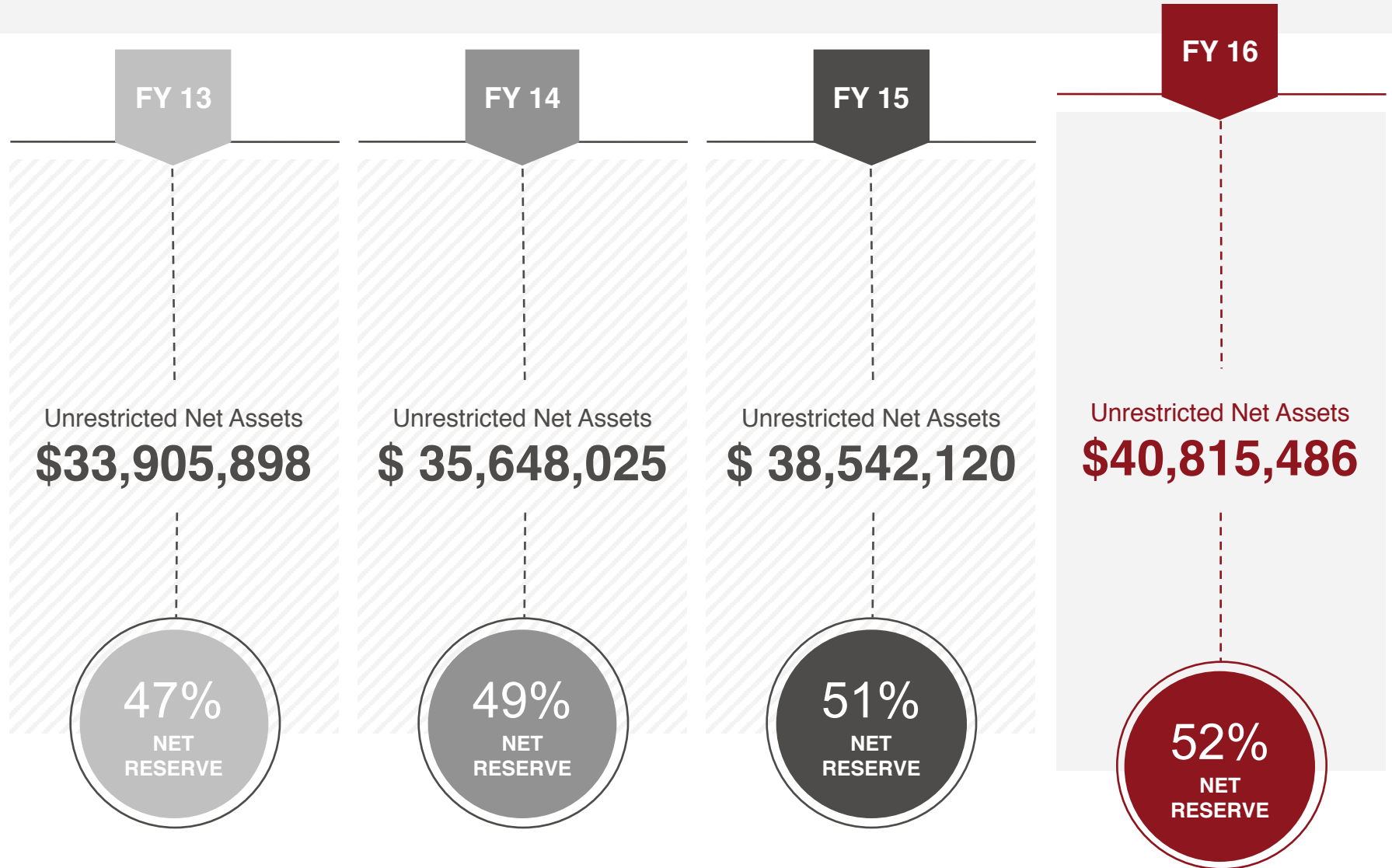
UPDATE

- Get ready for the AY18/19 review (virtual visit):
- Start updating/rewriting the 2014 self-study report
- Start compiling information for the embedded report on program review and assessment (academic departments and support services)
- Kristen Johnson and Patricia Diawara have been accepted to serve as HLC Peer Reviewers



College Reserves

College Reserves





Pilot Programs

Pilot Programs

UPDATE

Provide an opportunity for ideas to come from all PPCC employees.

- Scalable ideas to improve student success, especially persistence for developmental students
- Small campus infrastructure projects

Pilot Programs

TrueGrit with Coach Lee

TrueGrit

6 sections of AAA109 in Spring 2016

- 4 Ice House sections + 2 On Course sections
- Pass rates: from 50% to 88%
- No statistical differences between TG and Non-TG sections

	No. of Students	Pass Rate
True Grit (TG)	82	76%
None True Grit (non-TG)	333	73%

Writing Fellows

- 4 sections of HIS101 in Spring 2016
- Statistically higher pass rates when consultation is a required part of the assignment (at least 5 visits)



Diversity & Inclusiveness

Diversity & Inclusiveness

UPDATE



Keith Barnes, Executive Director of Diversity, Equity & Inclusion

- Raise visibility, awareness, commitment and knowledge of the importance of supporting a culture of inclusion – improving, celebrating and flexing the strength found in our diversity.
- Professional development for PCC employees
- Student-centered programming and support
- Faculty curriculum support
- Assessment of our current campus culture and responsible for measuring progress
- Participate in recruiting, hiring and onboarding processes for new employees.

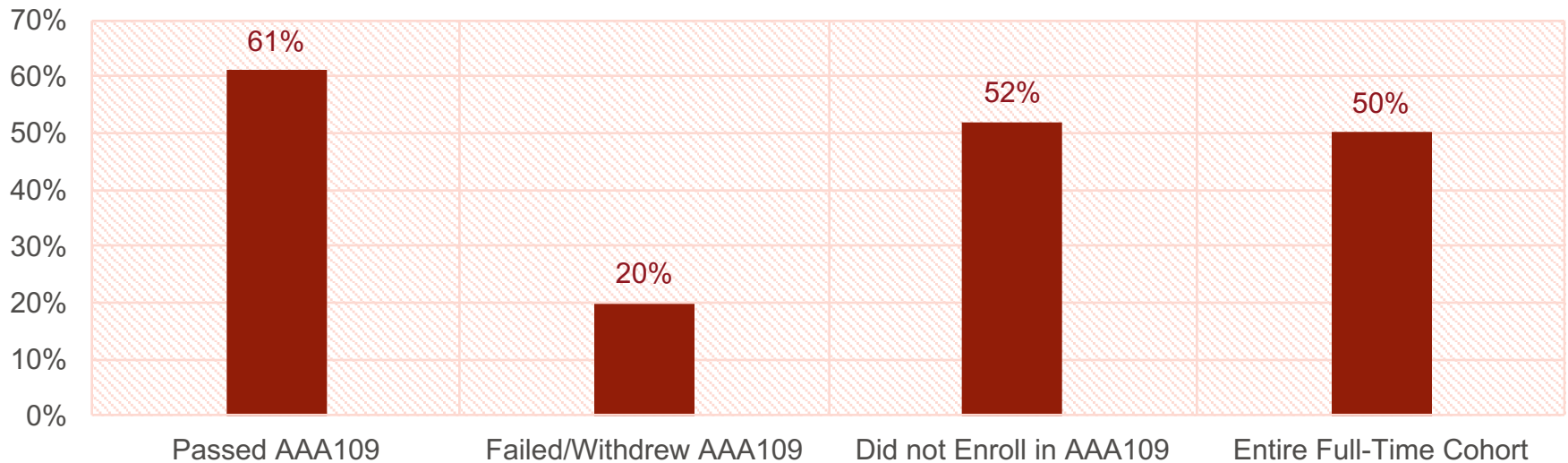


PPCC Initiatives

2015/2016

AAA 109

Fall 2014 to Fall 2015 Retention Rate (full-time students)



New Academic Programs

- Construction and Carpentry
- Cyber Security

Service Learning

2014/2015

- More than 8,000 students, staff, faculty and community members impacted
- 4,452+ hours served, equaling 185.5 days

Looking Ahead

- 20+ Service Learning faculty (from all divisions)
- 40+ Sections of Service Learning courses for fall semester

PPCC Initiatives (15/16)

Service Learning

Service Learning Projects

Tax Help Workshop ACC

Letters of Advocacy ENG

Memoir Writing for Seniors ENG

Recuperation of Burn Areas POS

Literacy Fairs Bricker Elementary
(with UCCS) LIT

Community Solution Project ENG

Cultural and Language
Presentations FRE

“Cool Science” Technical Document
creation/donation ENG

Math Intrigue Outreach MAT

Outdoor Recreation Programs:
Children, Vets, Special Needs REC

Books for Bricker LIT

Tutoring tools for Math Concepts
MAT

Deaf Culture Immersion:
Real World Experience

History of Fountain Creek HIS

Power of Story: Text sets for
struggles LIT

Boys & Girls Club COM

PICTURE: Portfolio Intercultural
Communication, Towards Using
Real Experiences COM

Marketing for “One Nation Walking
Together Native American Film
Festival” MGD

Community Proposals for Change
PHI

Fountain Creek Clean-up ENV

Refugee Outreach PHI

Consult with Community Partner on
Org. Communication COM

Interactive with Animals ZOO

Community Forum: Race Relations
in Colorado Springs PHI

PHI Ethics Classes:
*God’s Pantry Food Bank and
Clothing; Pikes Peak Humane
Society; Colorado Springs Code
Enforcement; Veteran’s advocacy;
Restorative justice; Monument
Creek clean up; Recycling in
Colorado; Autistic children
playdate.org; Homelessness-
helping from the inside; Broadmoor
Land Parcel Issue (Strawberry
Acres); Foster Care Reform;
Haircuts for poor families at The
Lanebuth Family Center Denver*

PPCC Initiatives (15/16)

Service Learning

Total of Service Hours Reported AY 15-16

	Hours
Fall 15	2,665
Spring 16	3,838
TOTAL	6,503

↑
Equals THREE
full-time jobs.

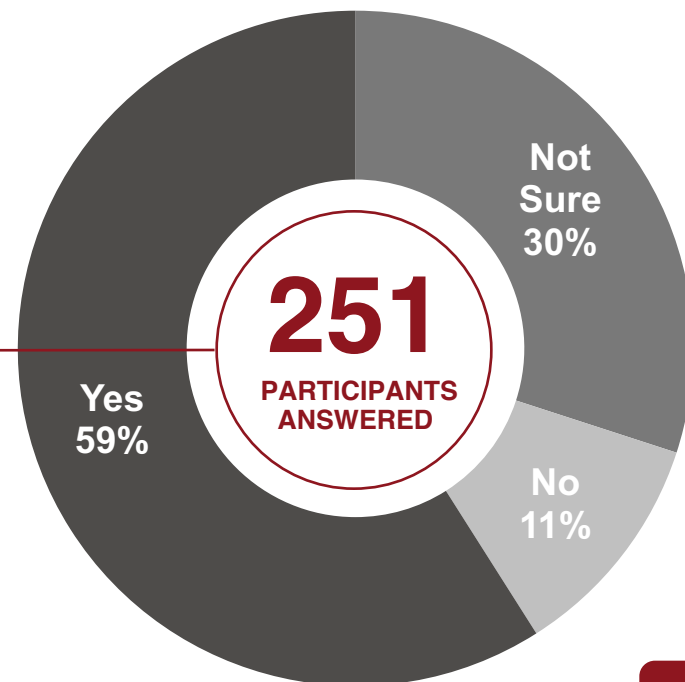
PPCC Initiatives (15/16)

Service Learning

Service Learning component useful to
learning objectives in course?



Did you use your course knowledge
(i.e. main learning objectives) to
impact your community positively
this semester?



Global Studies

Provide and promote opportunities to experience and honor local and global cultures

- Anyone with a global background or outlook is welcome
- Association of students, staff, faculty and community members
- Two events a year
- Weekly round table

Study Abroad

- Costa Rica in May 2017—9 days
- PPCC credit-bearing courses—Late Start Spring 17
- Courses Offered: Business, Communication, English, History, Outdoor Leadership, Photography, Political Science and Spanish

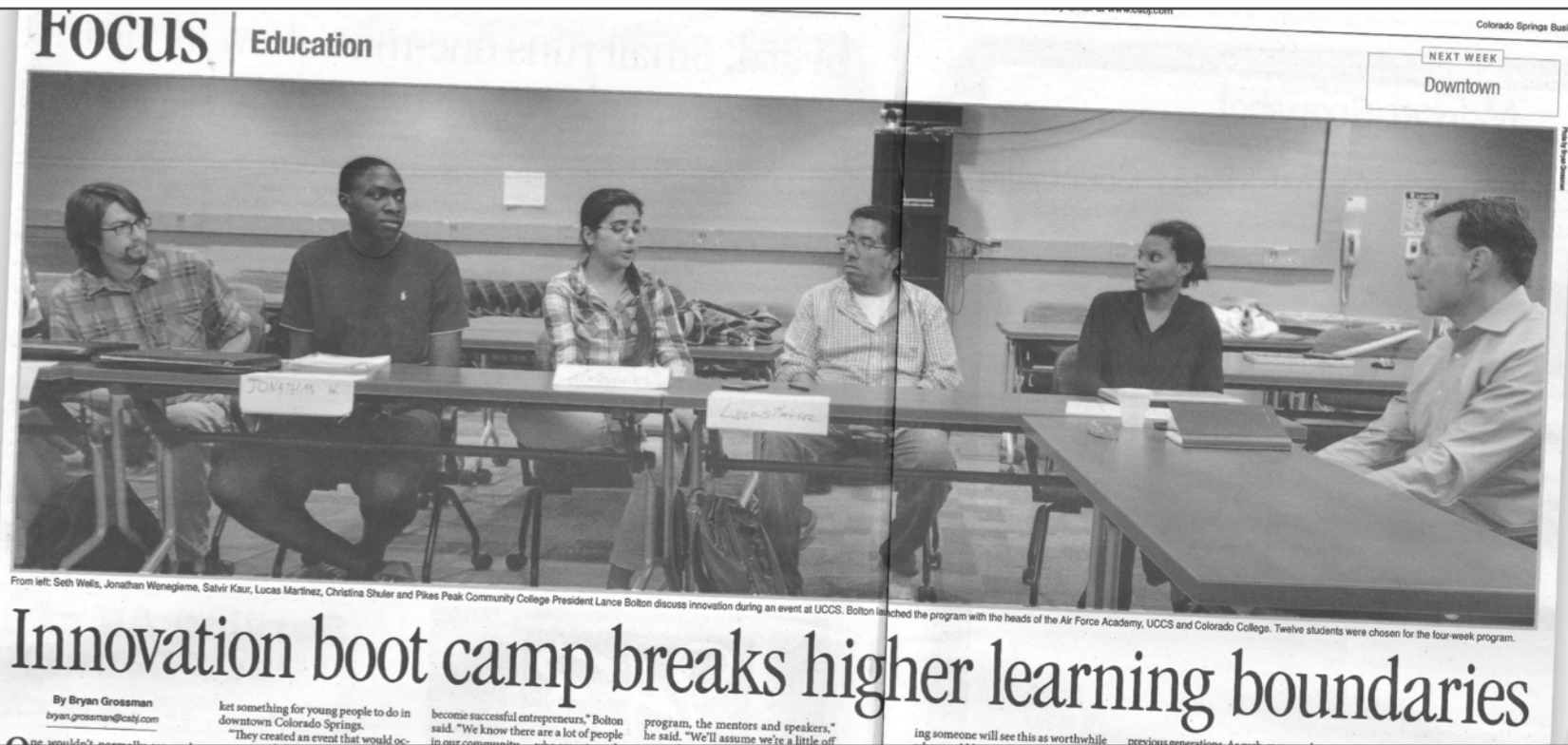
Partnerships

- Springs Fabrication Welding Training Center - **118**
- Goodwill Diesel Mechanic Program - **36**
- Falcon (D-49) Creekside Success Center - **547**

PPCC Initiatives (15/16)

Partners & Entrepreneurship

Entrepreneur Center



PPCC Initiatives (15/16)

Partners & Entrepreneurship



- Summer Program
 - Kudos Sheridan Kalletta
 - Kudos USAFA Instructors
 - Kudos Students
- Downtown property
- Leadership



Key Accomplishments

Key Accomplishments (15/16)

PPCC Website

PIKES PEAK COMMUNITY COLLEGE

Search

Login | Apply

Current Students Faculty & Staff Community Military & Veterans

Website

Admissions

Academics

Student Life

About PPCC

Launched New Web Site

- System Office Recognition
 - Marketing Team & ITSS
- Incorporates more use of images and videos
- Primary market is prospective students
- Separate portals for students, faculty/staff
- A work in progress
- Focused consistent departmental information including degrees and certificate options
- Training is available – dates already scheduled

Foundation

Foundation Funding Increase

- Annual Donations
 - \$200,000 12/13-
 - \$400,000 13/14
 - \$650,000 14/15
 - \$1.6 million 15/16
 - \$825,000 in student & program funding 15/16

Thank you for employee giving!

Key Accomplishments (15/16)

Adjunct Advancement Program

Adjunct Advancement Program

2015 40 participants completed May Institute and are at Tier 2

2016 19 participants at Tier 2 - **and** - 27 participants at Tier 3



Key Accomplishments (15/16)

Adjunct Advancement Program

Adjunct Advancement Institute Completions

Vanessa Aragon	Andrew Converse	Kitty King	Barbara Overgaard
Ruby Belton	Karen Coyle	Karen Kirshenbaum	Cynthia Pelka
Jared Benson	Angela Crews	Irina Kopteva	Pamela Phillips
Brook Bhagat	Rachel Dewey	Katerina Kostin	Ron Smith
Gaurav Bhagat	Laura Ebat	Cynthia Krutsinger	Chris Swanson
Roger Bower	Warren Edick	DeLyn Martineau	Betsy Tuma
Lynne Chandler-Garcia	Nina Ellis-Frischmann	Michelle Mondragon	June Wagner
Heather Byrne	Carol Forseth	JoAnne Myers	William Winaski
Debra Buenting	Barbara Garrett	Gordon Neal	Frauke Wright
Sarah Clay	Lisa Hollis-Brown	Monica Novak	Valerie Zallar

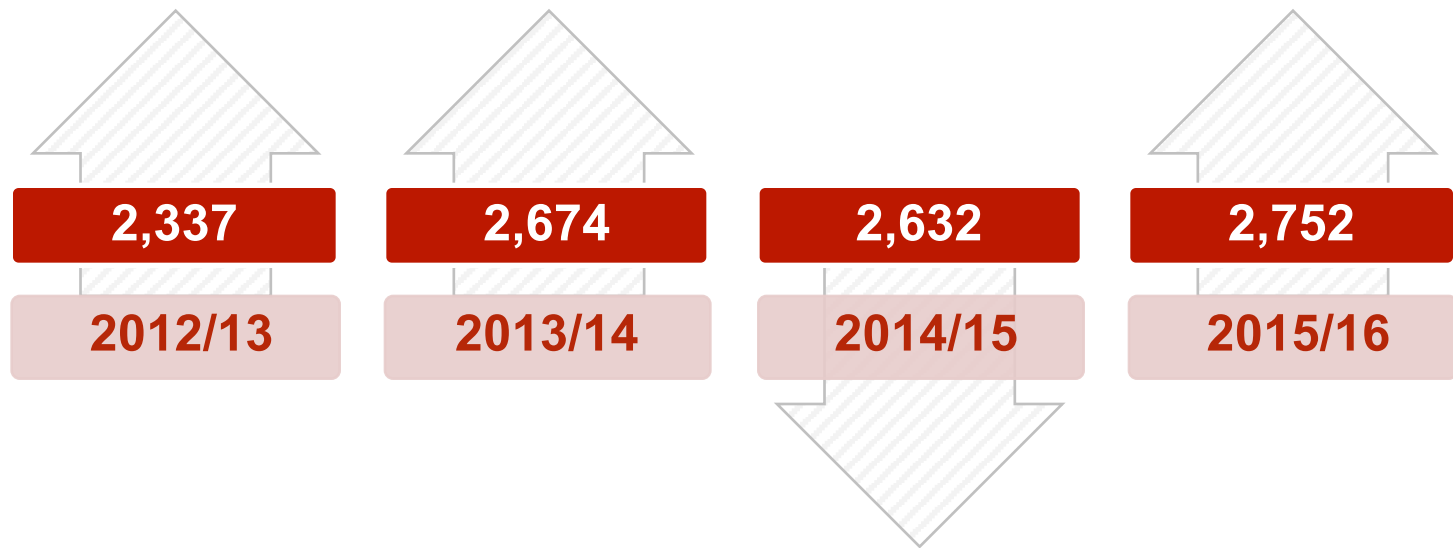
A grayscale photograph of a graduate wearing a cap and gown, standing in a crowd. The image is blurred, with the graduate in the foreground being the most prominent. A dark horizontal band is overlaid across the middle of the image, containing the text.

PPCC Graduates

Key Accomplishments (15/16)

PPCC Graduates

PPCC Graduates Degrees/Certificates Awarded





Capital Projects

Website

Centennial Campus

Capital Projects

Project Updates: Centennial

- Aspen Remodel
 - Contractor selection 2nd week August, estimated project start date after September 1st
- Learning Commons
 - Waiting on bid returns next week/project will begin in September–completion Spring 2017
- D-Lot Hillside
 - Project on its way in spite of some rain\storm delay
 - Stairs are expected to be open for fall semester
 - Landscape targeting a completion date of late August
- Classroom Improvement
 - Spring: A311, B301, B309 (Completed)
 - New classrooms (16/17): B232, B234A, B302, B304, B305
 - New flooring in B205

CONTINUED ↓

Capital Projects

Project Updates: Centennial

- North side drop off area
 - In design planning phase; coincides with Learning Commons project
- Painting –
 - Interior halls, classrooms and rotunda
 - Exterior; front of Aspen Building
- Way-finding signage around campus (on-going)
- 5 new ADA parking space on the west side for a total of 50 ADA parking spaces campus wide
- Child Development Center
 - New flooring in D110
- Boiler upgrades/replacement to be completed in October 2016

Capital Projects

Hillside & Stairs



Capital Projects

Project Updates: Rampart Range

Rampart Range Campus

Capital Projects

Project Updates: Rampart Range

- Walking path
 - Design completed and prepared to be sent out for bid soon.
- Astronomy dome (Completed)
- Classroom improvement
 - Spring: W116 (Completed)
 - Winter: W117, W118
 - New Classrooms (16/17): E108, E110, E113, E114, E115, E116, W106, W111, W112, 114

Capital Projects

Astronomy Dome



Downtown Studio Campus

Capital Projects

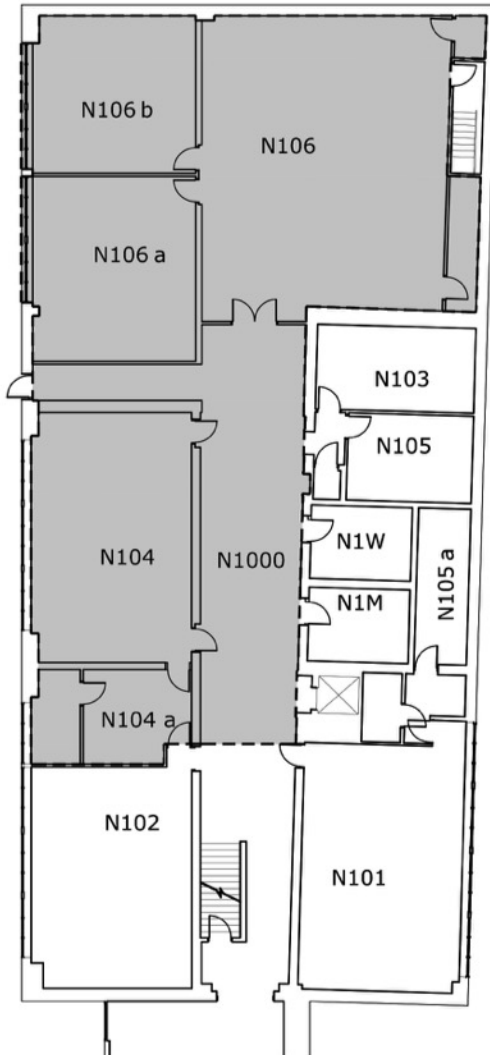
Project Updates: Downtown Studio

- Marie Walsh Sharpe Creative Commons –
 - Design team was selected and should have drawings to us mid-August.
 - Project completion spring 2017
- Classroom improvement
 - Spring: S103
 - Winter: S120, N203, N206
 - New classrooms (16/17): N201

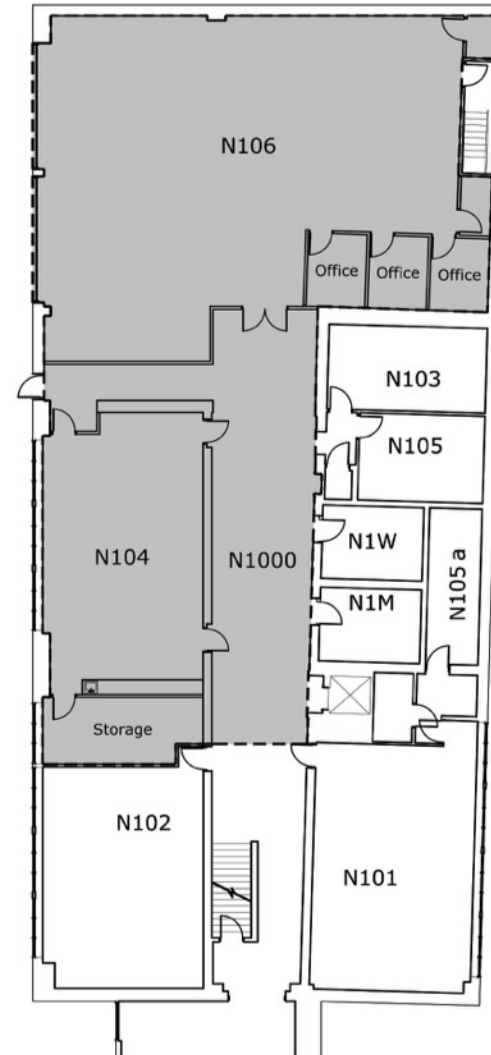
Capital Projects

Marie Walsh Sharpe Creative Commons

Existing

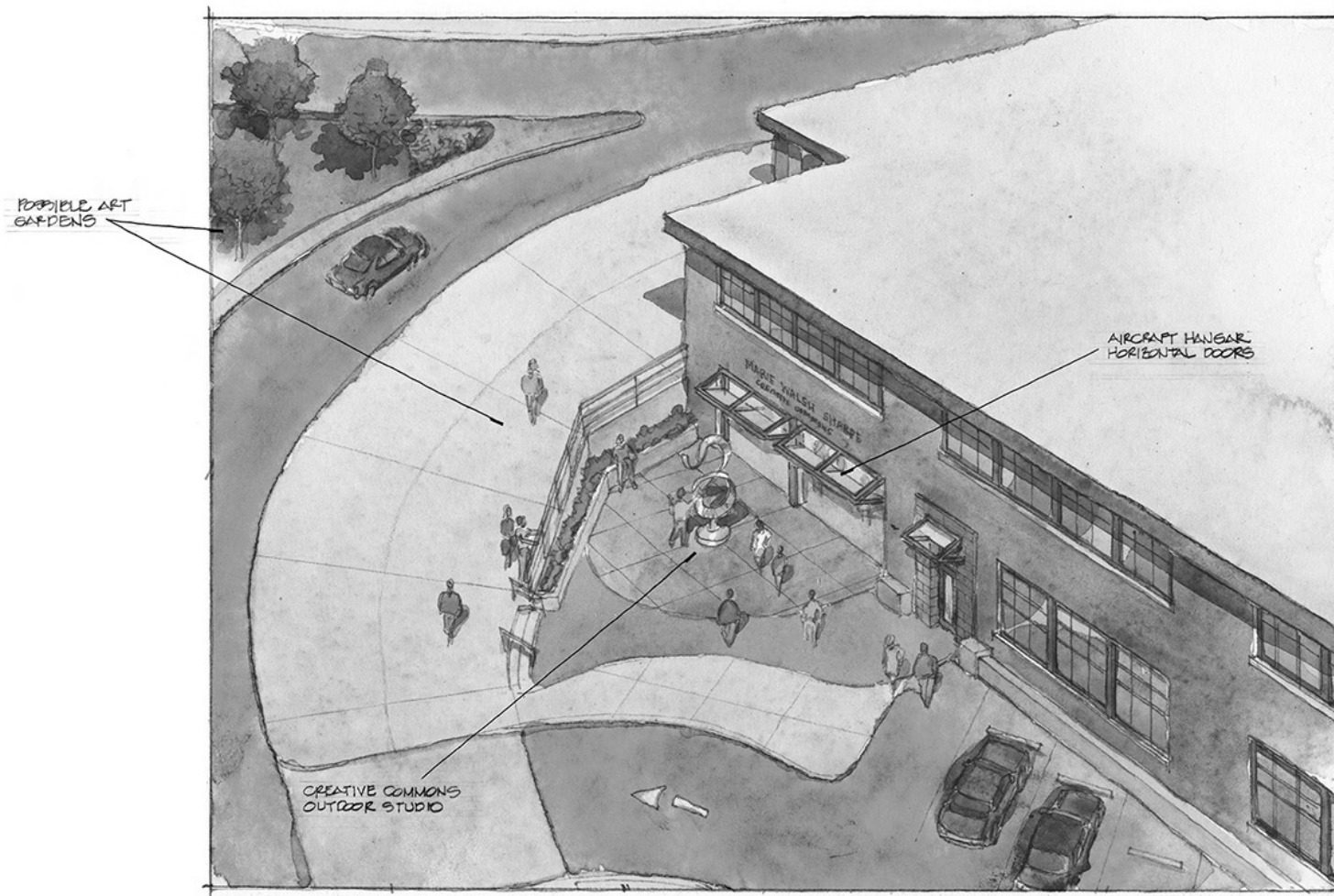


Proposed



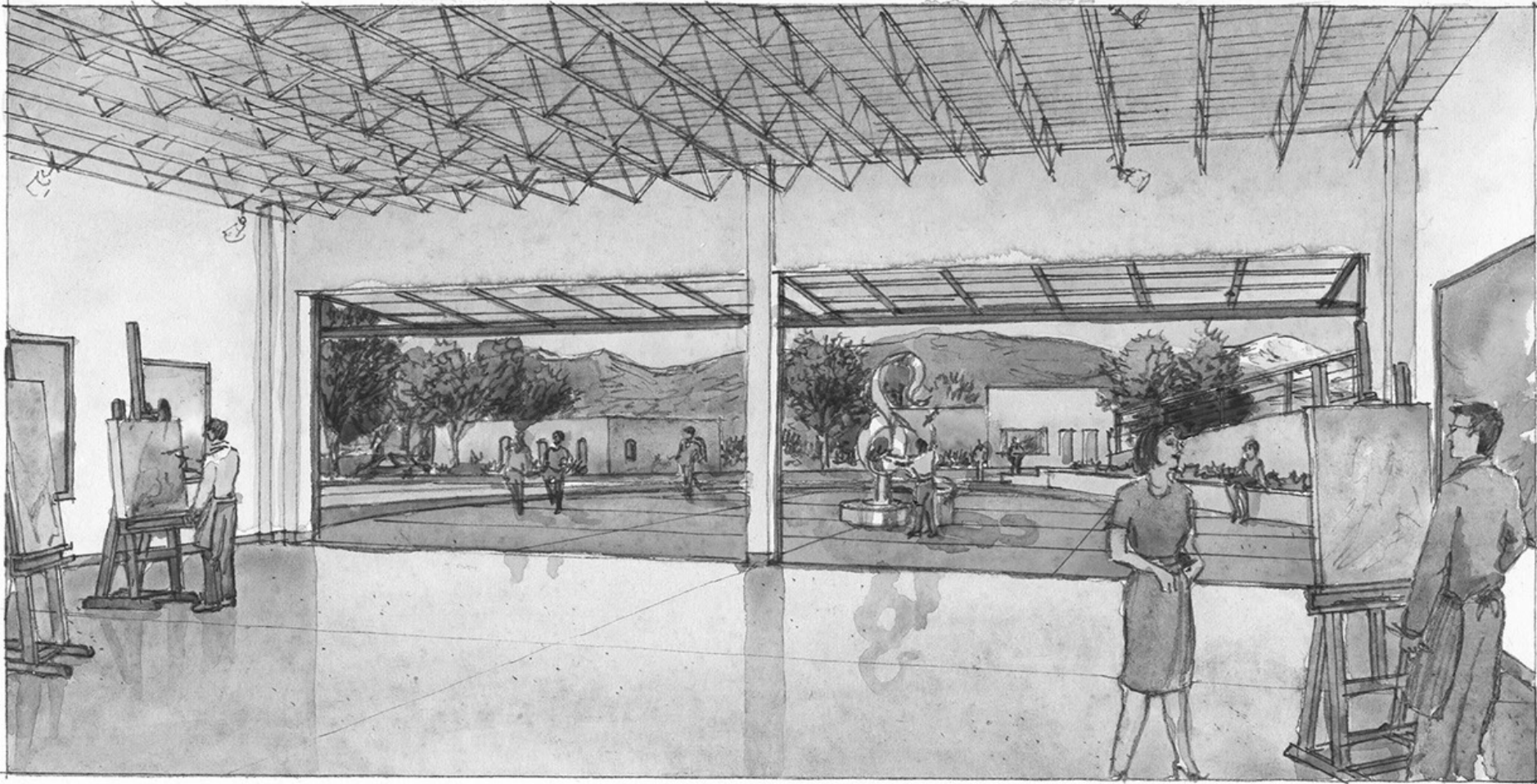
Capital Projects

Marie Walsh Sharpe Creative Commons



Capital Projects

Marie Walsh Sharpe Creative Commons



Capital Projects

Marie Walsh Sharpe Creative Commons



ORIGINAL BOARD-FORMED
CONCRETE / DISPLAY CASE

TRANSLUCENT WALL
OR ANNEALED METAL



Other Updates

New Academic Programs

- Construction and Carpentry
- Cyber Security

Other Updates

BAS Emergency Service Administration

- Emergency Service Administration
- Partnering with Arapahoe Community College
- Led by Dean Rob Hudson
- Currently working through approval process with HLC
- Fall 2017 start is expected
- Great value for our students:
 - Credit hour costs
 - Seamless movement into bachelor's program

Fall 2016 Strategic Planning Kick-off

New PPCC Team Members

Introductions of new team members with campus-wide missions:

Dr. Homer Wesley – VP Student Services

Lisa James – ED PPCC Foundation

Dr. Josh Baker – VP Instruction

Warren Epstein – ED Marketing and PR

Dr. Patrice Whitley – Dean of Learning Commons

Paul Ross – Physical Plant Director

Keith Barnes – ED Diversity, Equity, and Inclusion



PIKES PEAK

COMMUNITY COLLEGE

Questions?