



President's Address

FALL 2015 | PDW

Focus Goals

- Began process in summer preceding the 12/13 AY
- Two year process (or more)

Focus Goal: 2

Advance Student Persistence (adopted 13/14)

- Learning Commons
- **Academic Planning Tools – COMPLETE!**



Focus Goal: 3

Improve Institutional Effectiveness (adopted 14/15)

- Integrate data to drive decision making and resources.
 - Assessment Methodologies
 - Adopted new assessment model - Feb. 2015
 - Established Assessment Committee - May 2015
 - Conducted Collective review - summer 2015
 - Ad Astra
 - Events Management
 - » Available for fall semester
 - » Submission form upgraded
 - Scheduling
 - » Available for spring 2016 semester
 - » FLAC/Scheduling Team working on preferences with chairs

Focus Goal: 4

Improve Enrollment (adopted 15/16)

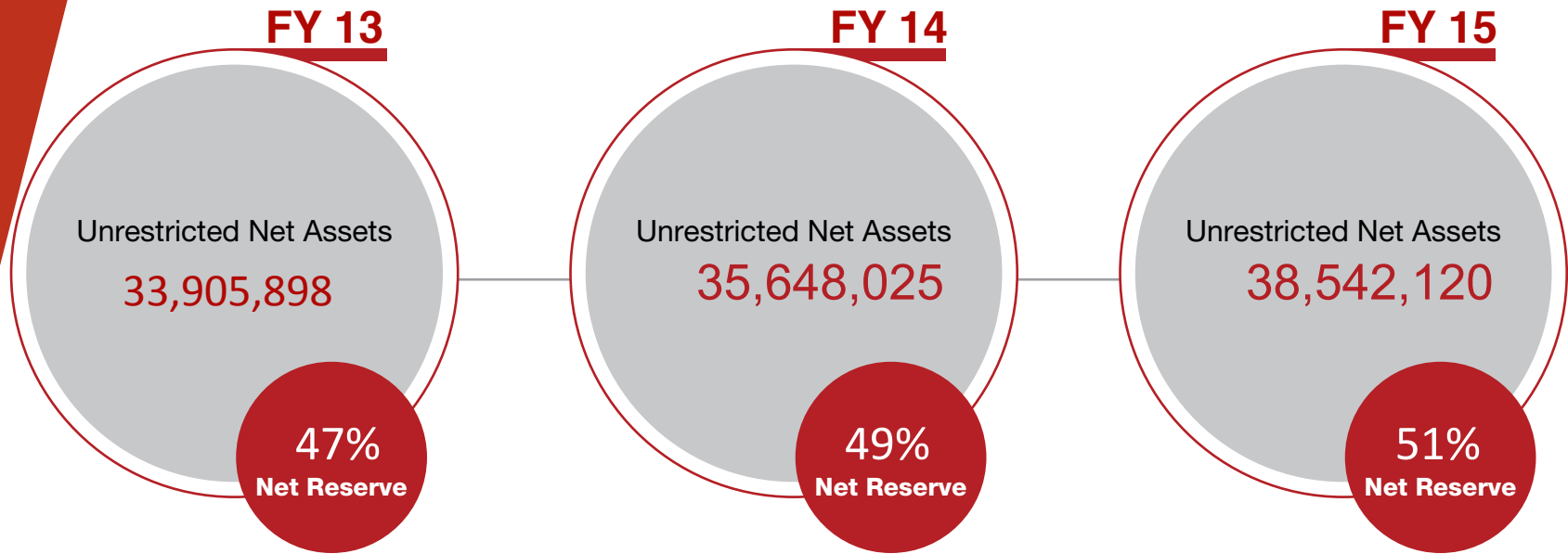
- Two key strategies:
 - Continue work to improve student persistence.
 - Develop a strategic and interwoven recruiting, marketing, and student onboarding plan.

- Objective #1: Stop the enrollment decline.

Enrollment

	10/11	11/12	12/13	13/14	14/15
FTE	10,826	10,546	10,407	10,013	9,555
Unduplicated	22,456	21,794	21,938	20,962	19,961

College Reserves



Pilot Programs

- Provide an opportunity for ideas to come from all PPCC employees.
 - Scalable ideas to improve student success especially persistence for developmental students.
 - Small campus infrastructure projects.

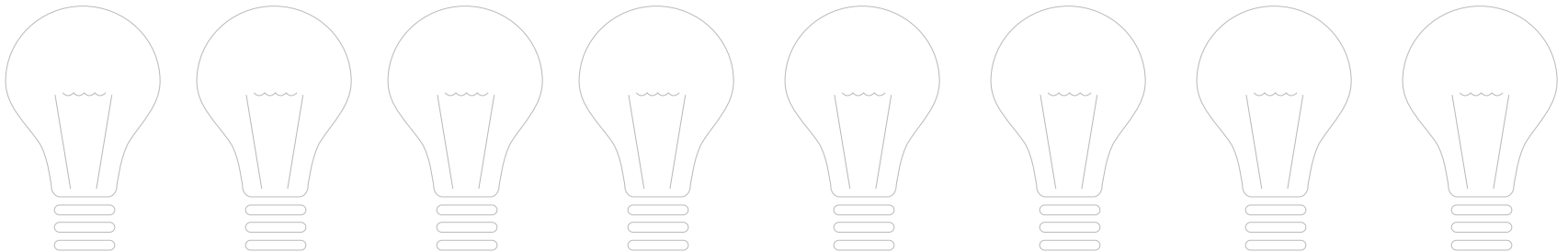
PPCC Pilot Programs

TRUTEGRIT
WITH COACH LEE

PPCC Pilot Programs

LED Classroom Lighting Upgrade

- **CC:** A167, A215, A352, B204a & A367
- **DTSC:** S205 & S215
- **RRC:** E112, W113 & N102a



PPCC Pilot Programs

Loan Tracker



PPCC Pilot Programs

Writing Fellows



PPCC Pilot Programs

Rampart Range Recycling Stations



PPCC Initiatives: 2015/2016

Diversity & Inclusiveness

- Objectives:
 - Cultural Shift
 - Valuing differences on behalf of our students and mission

- Tactics
 - Community Outreach
 - Training
 - Education
 - Engaged Committee Efforts Across College
 - Consultant Support
 - Perhaps a diversity coordinator / director position in the future.

PPCC Initiatives: 2015/2016

AAA 109

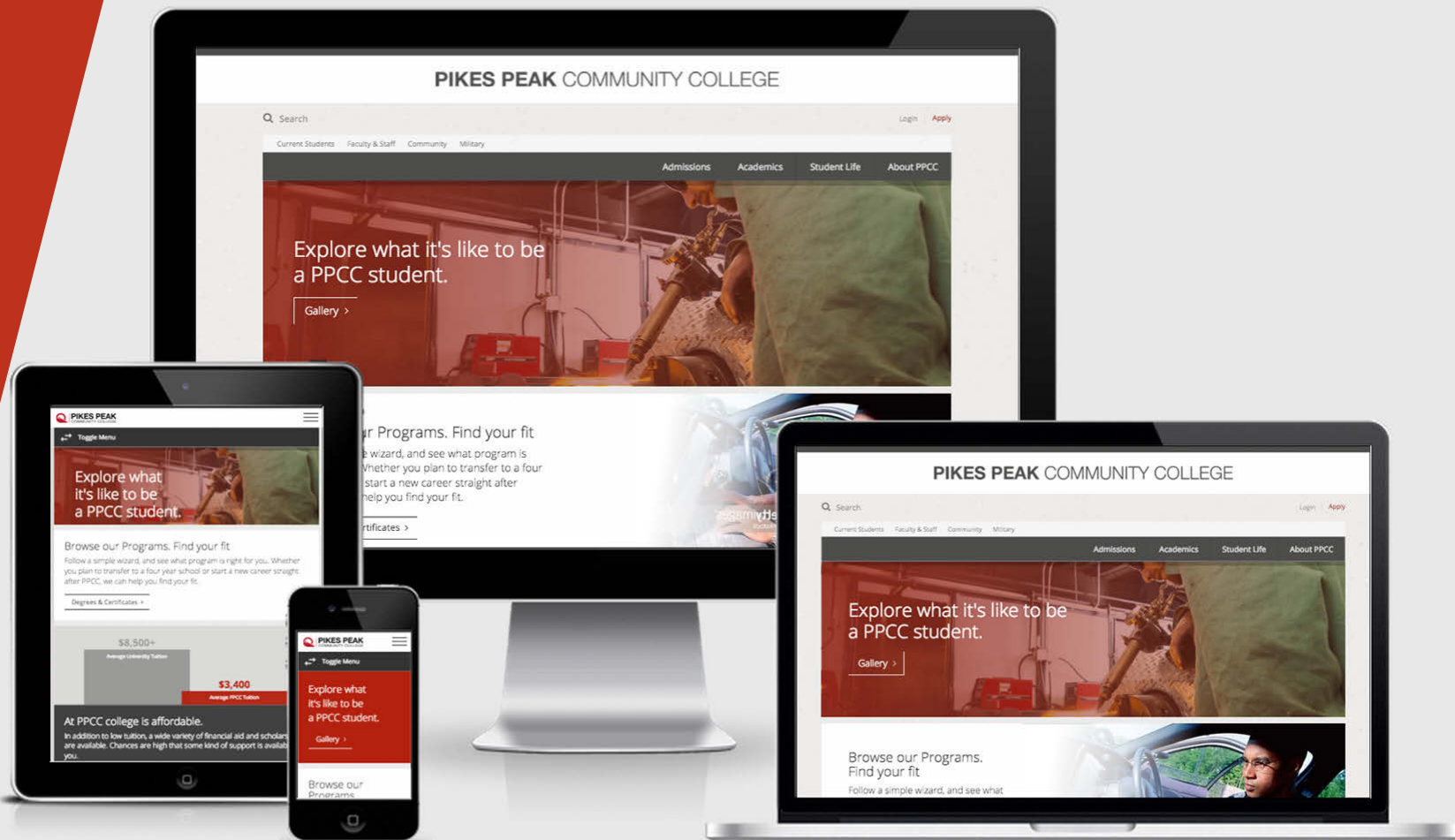
- Students who pass AAA109 are more likely to pass other courses than remedial students who did not enroll in AAA109. **84% vs. 76%**
- New/Transfer students who passed AAA109 in fall reenrolled at a higher rate than students who successfully completed pre-college level courses without taking AAA109. **52% vs. 40%**
- Students who enroll in AAA109 pass pre-college level courses at a higher rate. **79% vs. 58%**
- In spring 2015, more than 70% of Ice House students, and 80% of On Course students “strongly agreed/agreed” skills learned helped them be more successful in other courses.

PPCC Initiatives: 2015/2016



- 2014/2015
 - More than 8,000 students, staff, faculty, and community members impacted
 - 4,452+ hours served, equaling 185.5 days
- Looking Ahead
 - 20+ Service Learning Faculty (from all divisions)
 - 40+ Sections of Service Learning Courses for fall semester

PPCC Initiatives: 2015/2016



PPCC Initiatives 2015/2016

Web Accessibility

- System President Procedure (SP-125)
- Plan submitted in December
- Web Accessibility Implementation Committee in formation

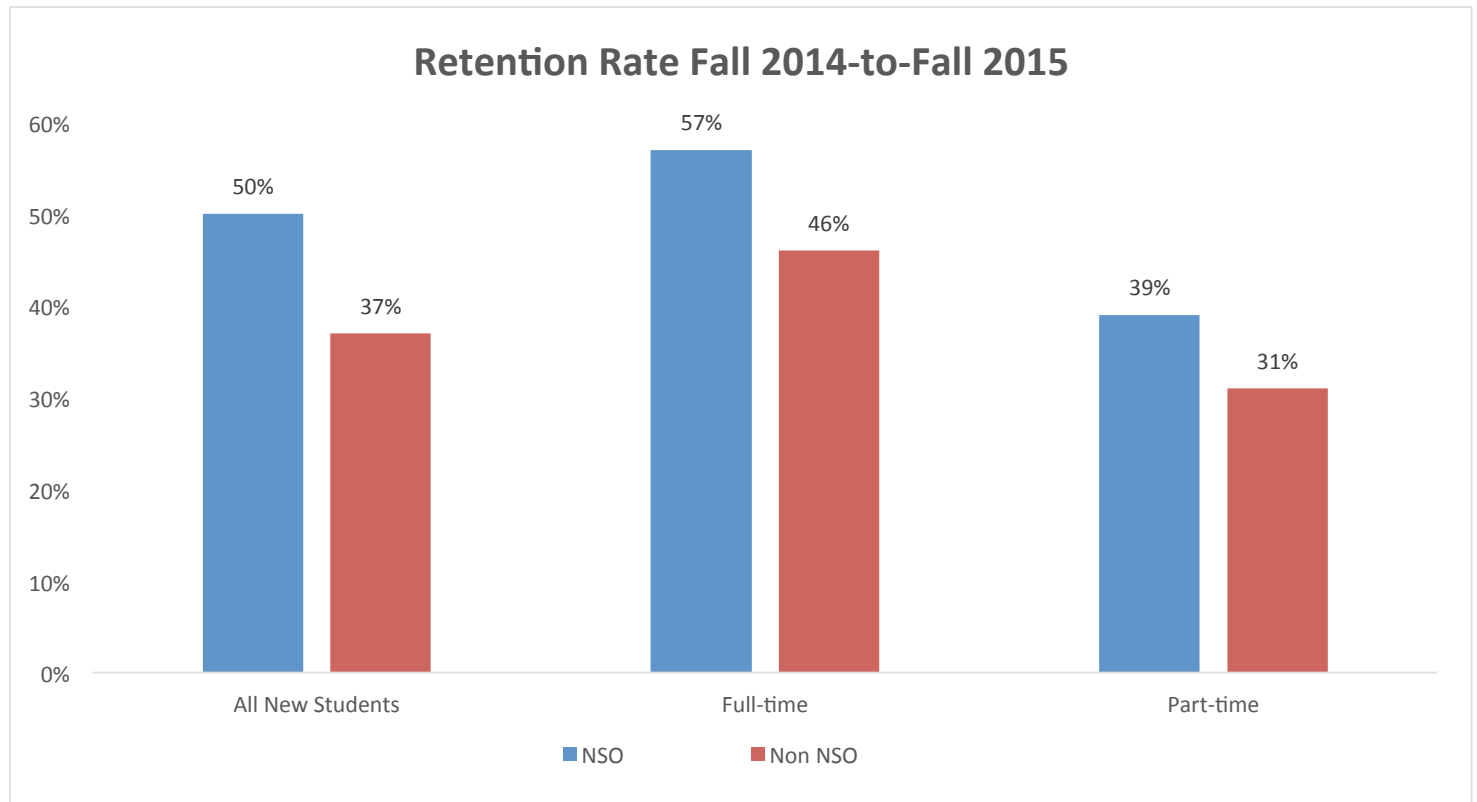
Key Accomplishments: 2014/2015

Graduates

- 2,337 in 2012/13
- 2,674 in 2013/14
- 2,632 in 2014/15

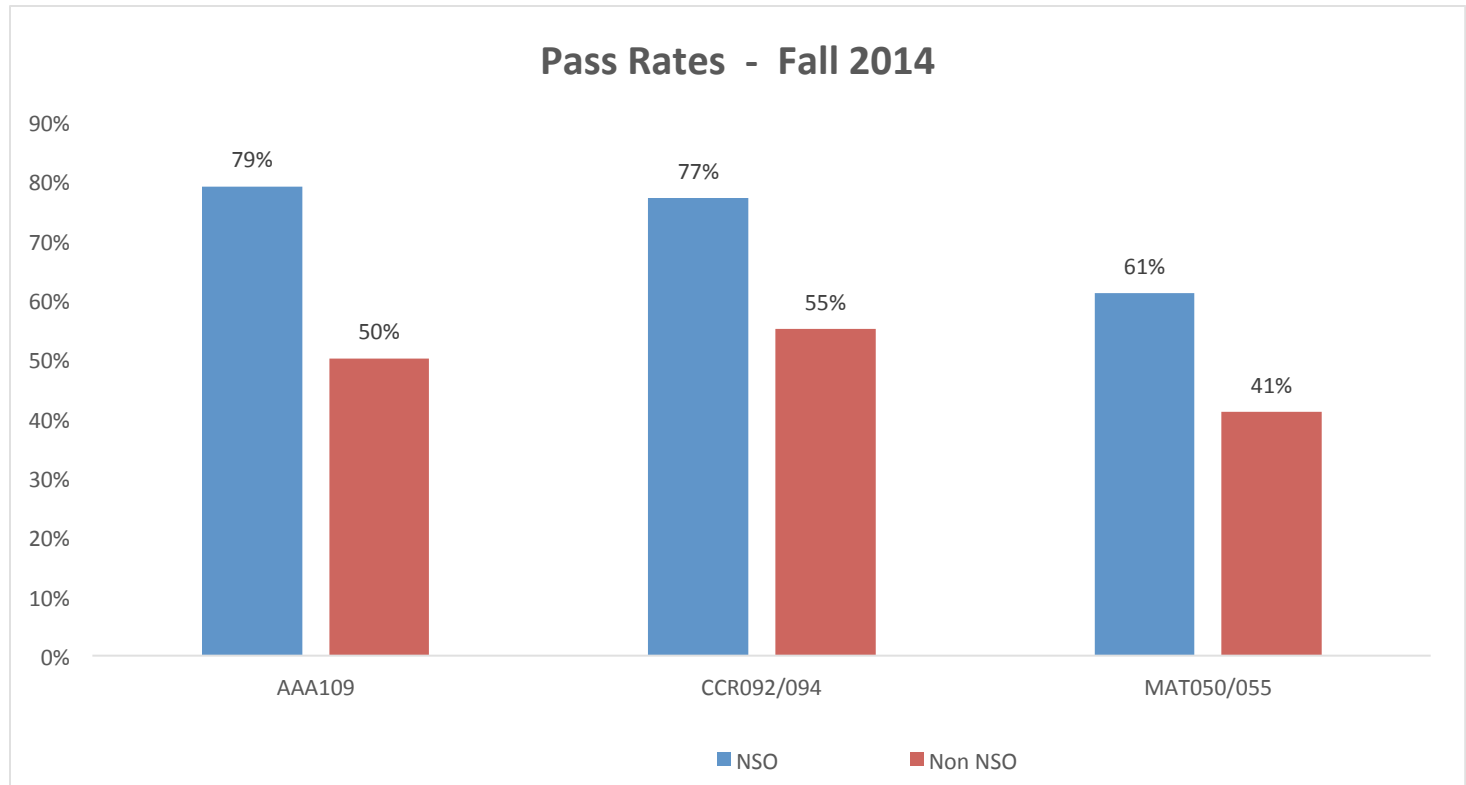
Key Accomplishments: 2014/2015

New Student Orientation



Key Accomplishments: 2014/2015

New Student Orientation



Key Accomplishments: 2014/2015

Foundation Funding Increase

- Annual Donations
 - \$200,000 12/13
 - \$400,000 13/14
 - \$600,000 14/15
- \$400,000 in student support
- Thank you for employee giving!



THE FOUNDATION
for
PIKES PEAK COMMUNITY COLLEGE

Key Accomplishments: 2014/2015

Adjunct Advancement Institute Completions

Vanessa Aragon	Andrew Converse	Kitty King	Barbara Overgaard
Ruby Belton	Karen Coyle	Karen Kirshenbaum	Cynthia Pelka
Jared Benson	Angela Crews	Irina Kopteva	Pamela Phillips
Brook Bhagat	Rachel Dewey	Katerina Kostin	Ron Smith
Gaurav Bhagat	Laura Ebat	Cynthia Krutsinger	Chris Swanson
Roger Bower	Warren Edick	DeLyn Martineau	Betsy Tuma
Lynne Chandler-Garcia	Nina Ellis-Frischmann	Michelle Mondragon	June Wagner
Heather Byrne	Carol Forseth	JoAnne Myers	William Winaski
Debra Buenting	Barbara Garrett	Gordon Neal	Frauke Wright
Sarah Clay	Lisa Hollis-Brown	Monica Novak	Valerie Zallar

PPCC Partnerships



From left: Seth Wells, Jonathan Wenegleme, Salvir Kaur, Lucas Martinez, Christina Shuler and Pikes Peak Community College President Lance Bolton discuss innovation during an event at UCCS. Bolton launched the program with the heads of the Air Force Academy, UCCS and Colorado College. Twelve students were chosen for the four-week program.

Innovation boot camp breaks higher learning boundaries

By Bryan Grossman
bryan.grossman@csbj.com

One wouldn't normally see multiple institutions of higher learning under one roof outside of athletic

ket something for young people to do in downtown Colorado Springs.

"They created an event that would occur quarterly," Harn said. "They would rent out a parking lot and bring in food

become successful entrepreneurs," Bolton said. "We know there are a lot of people in our community... who are extremely supportive of young entrepreneurs and those who want to do startups. But these

program, the mentors and speakers," he said. "We'll assume we're a little off course but we'll learn and be better next time. Whether next time is the launch

ing someone will see this as worthwhile who would love to host it."

Bolton, who visited the East Coast with The

previous generations. As such, more working adults are pursuing their own ventures. "There are startling statistics about

ence... They see opportunities the world presents from all sorts of different angles.

Entrepreneur Center



University of Colorado
Colorado Springs

COLORADO
COLLEGE



PIKES PEAK
COMMUNITY COLLEGE



PPCC Partnerships



Diesel Mechanic Program



PIKES PEAK
COMMUNITY COLLEGE

PPCC Partnerships

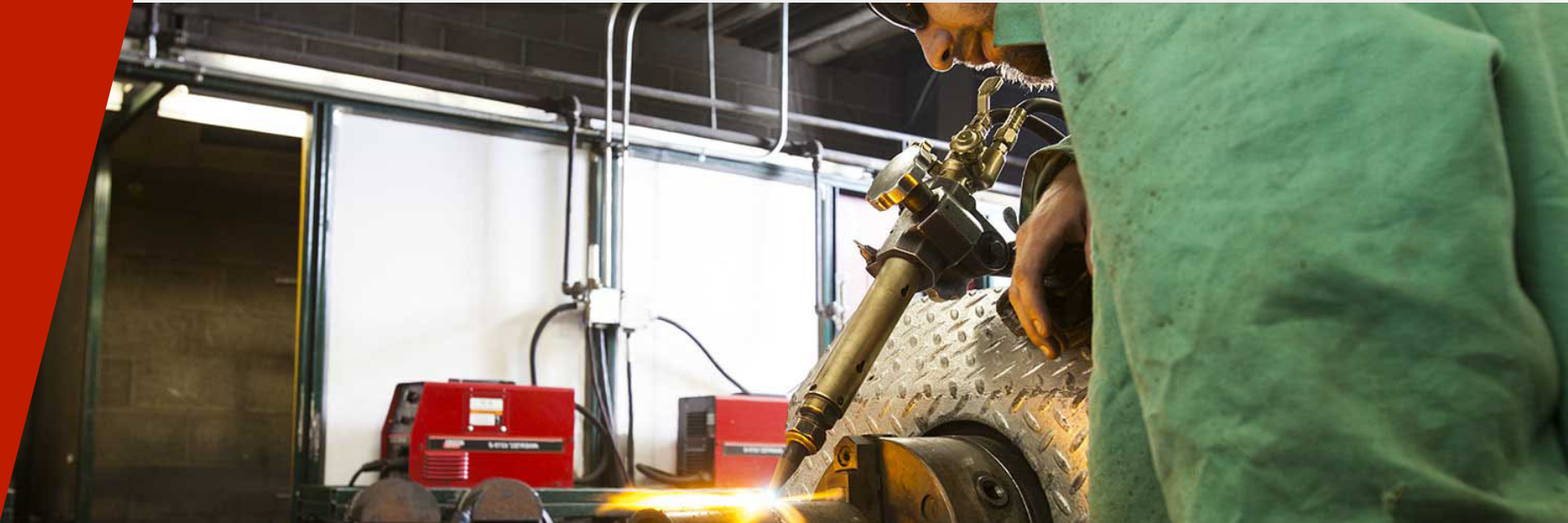
Workforce Center Survey



University of Colorado
Colorado Springs

PPCC Partnerships

The Welding Training Center



PIKES PEAK
COMMUNITY COLLEGE



SPRINGS FAB

PPCC Partnerships

Falcon Location



PPCC Partnerships

Sierra Completions COS Airport



Capital Projects

Classroom Improvements

Year Two

CC	DTSC	RRC
A156, A172, A216b, A216c, A250, A254, A215, A218, B253a, B253c, B256	N214, N216, N218, N220, N222, N224, N226, S205, S215	E102, E109, E112, W113

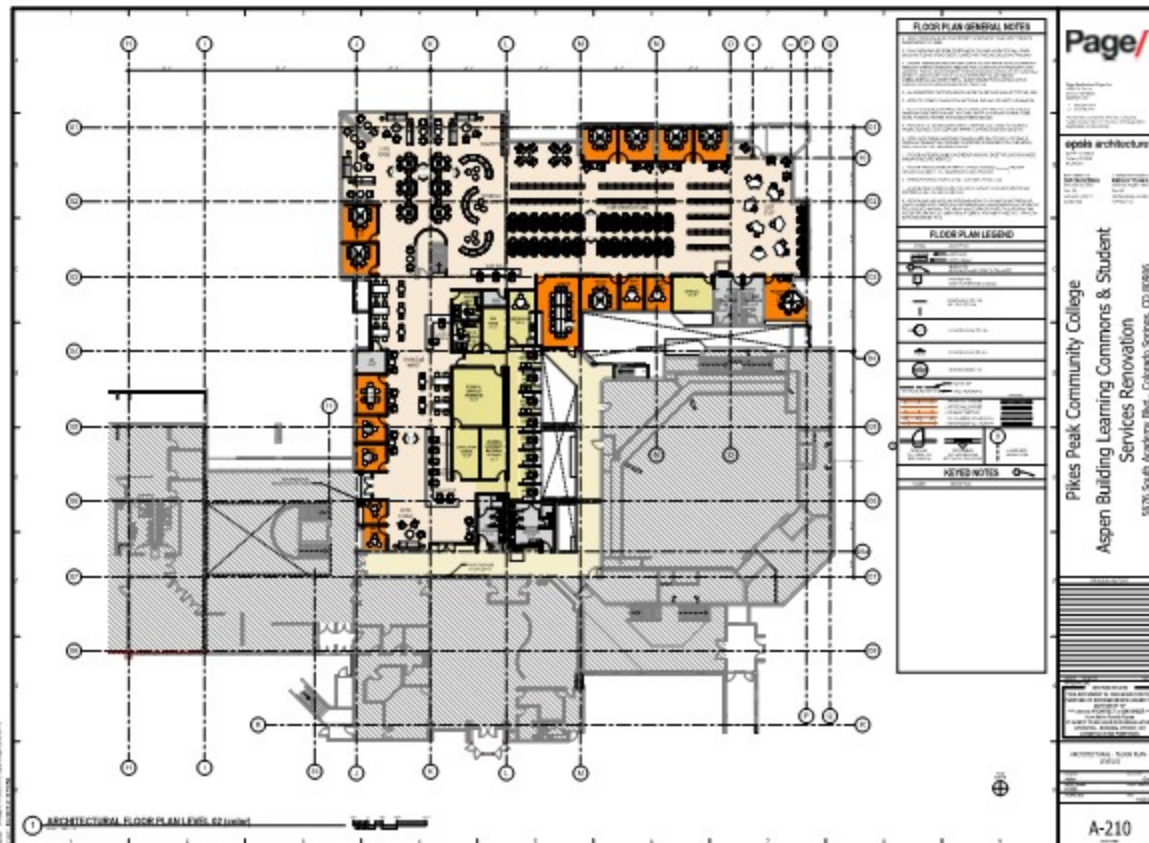
Capital Projects



- CC Hillside: Out to bid
- CC A229 Suite: Aug 17 move-in
- CC Phase II Boiler Replacement \$509,000
- CC ADA Locker room improvements: Complete
- Sierra Madre Parking completion: Oct 2015, 65 spots
- CC ADA Parking: complete
- CC Ring Road and North Parking lot: Repair beginning

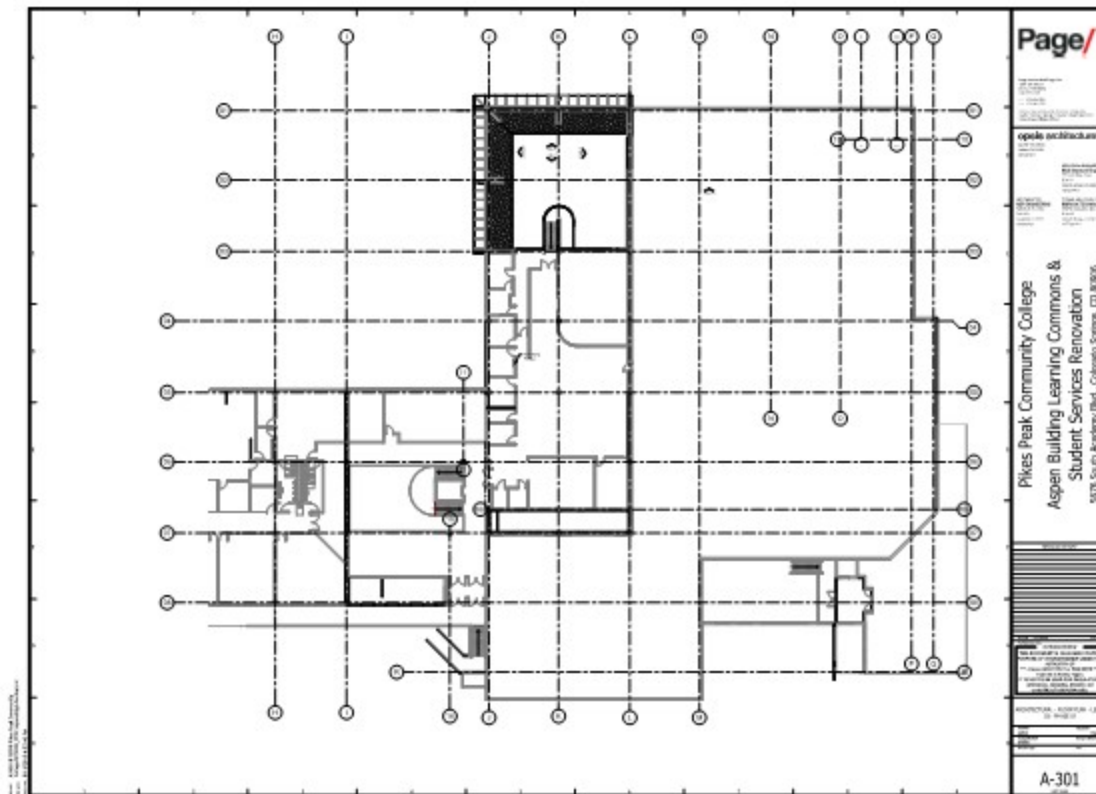
Capital Projects

Aspen Renovations



Capital Projects

Aspen Renovations



QUESTIONS?