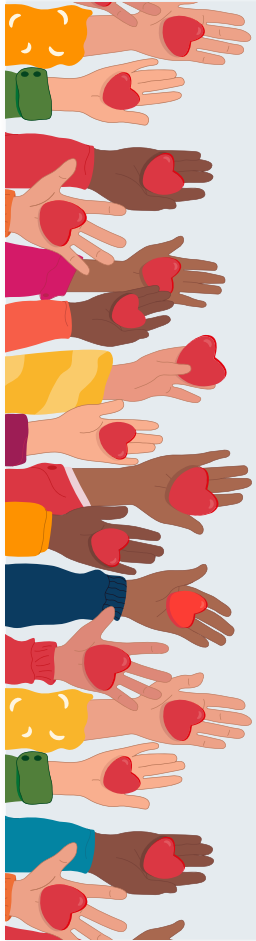


Submit your news and events to pikespeak.edu/publicity-request by Friday, Jan. 19 at 5 pm for the Jan. 29–Feb. 11 issue.

Refer to pikespeak.edu/ssj or your PPSC email for a digital edition with live links.



SINGLE STOP PROGRAM

SINGLE STOP is here to ensure all students have access to needed resources, which is why PPSC offers a variety of free services for mental, emotional and physical health. Single Stop can connect you with the resources available within and beyond PPSC.

Reach out to Kandy Ruiz (Kandy.Ruiz@pikespeak.edu) for more information.



BEHAVIORAL INTERVENTION TEAM

If someone you know is exhibiting unexplained changes in behavior health problems, evidence of substance or alcohol abuse, dark thoughts, or victimization, the BIT is trained to help.

Submit an anonymous report to the form via the QR code.

BETTERMYND

Call the BetterMynd Telehealth Service crisis hotline and receive immediate help from a trusted and supportive counselor when you need it. Available 24/7/365.

Crisis Hotline Number: 844-BTR-MYND (844-287-6063)

COMMUNITY TABLE

Free walk-in food pantry and shared space for students, faculty, and staff at Centennial Campus (A312), Downtown Campus (S234), and Rampart Range (S207). No ID or demonstration of need required.

Open Mon–Fri | 8 am–5 pm

MOBILE FOOD MARKET

Monthly mobile food markets open to students, staff and community members. Distribution on first-come-first-serve basis. No ID or demonstration of need required.

Organized by Student Experience, in partnership with Southern Colorado Care and Share. Email Student Life at SLife@pikespeak.edu for date of next mobile food market.

ACADEMIC OPPORTUNITIES



WORK STUDY EMPLOYMENT OPPORTUNITY

The Marketing and Communications Department is looking for videography, photography, social media and website management work studies to join the team. Check requirements and job description in the QR Code.



PHYSICAL THERAPIST ASSISTANT PROGRAM

Virtual information sessions offered periodically from January through April 2024. Next virtual session is on Wednesday, January 24th from 5:30–6:30pm. Register today! For questions, reach Keyshon Cooks at (719) 502-2364 or Keyshon.Cooks@pikespeak.edu.



LEARN AMERICAN SIGN LANGUAGE (ASL)

Check out this video for more details. Comment questions on the video directly or reach out to Jason.Gunderson@pikespeak.edu.

CREDIT FOR PRIOR LEARNING—EARLY CHILDHOOD EDUCATION

Already have experience working in Early Childhood Education? Receive up to 12 credits for your previous work! New and improved process—no cost to you, managed totally online with quick response. Request and complete the portfolio, essay and quiz to gain credits. Learn how by contacting Deborah at (719) 502-3463 or Deborah.Palarino@pikespeak.edu.

PARLEY

Get published in Parley, PPSC's literary and arts journal. We are accepting poetry, fiction, nonfiction, photography, and visual art. Email Parley@pikespeak.edu to make a submission.

PPSC STUDENT PAPER

Check out PPSC's student newspaper at pikespeakpaper.org for events and news on campus. Published by PPSC's journalism students.

SERVICE & RESOURCES

FAFSA/CASFA

You may be eligible for federal or state financial aid. PPSC Financial Aid Advisors are dedicating every Wednesday to assisting you with completing the 2023-2024 FAFSA/CASFA application. Drop-ins welcome. Please bring all 2021 income/asset information. Dependent students must have parent/guardian present.

Reach out by email at FinancialAid@pikespeak.edu or by phone at (719) 502-3000.

TRIO

TRIO Student Support Services is now accepting applications for Spring Semester. The deadline to apply is February 29, 2024. **Students may apply using the online application at pikespeak.edu/trio.**

Got questions? Visit A130, Centennial Campus or call (719) 502-3222

COMMUNITY TABLE DONATIONS APPRECIATED

The Community Table is always looking for donations. Food items (soda, frozen meals, fresh produce, instant rice, seasonings), clothing (new, used, gently washed and folded), and hygiene items (dental and toiletries) are appreciated.

Donations accepted Mon–Fri | 8 am–5 pm Centennial Campus, A312

TAX HELP COLORADO

Saturday, Jan. 27 | Centennial Campus, Atrium Tax season is upon us! Don't let April 15 sneak up on you! Take advantage of no cost tax help. **PPSC faculty and staff only. By appointment only.** Email TaxHelpCO@pikespeak.edu for more details.

PROMOTING ADVANCEMENT AND GROWTH FOR EDUCATORS (PAGE)

Calling all part-time instructors to earn while you learn! Advance your pay when you earn professional development units and increase your time teaching at PPSC. **Submit your application to join PAGE by February 9.**

Reach Gina with questions at (719) 520-3219 or Gina.Thorne@pikespeak.edu.

CLUBS & EVENTS



LATINO ALLIANCE

Next Meeting: Feb. 21st | 12 pm

The Latino Alliance exists to advocate for Latino/Hispanic students & staff to build bridges and celebrate diversity within Latino/Hispanic culture. Sign up for invites and updates using the QR code.

STUDENT ART EXHIBIT

Last chance to experience the talents of PPSC Art, Photography, and Multimedia Graphic Design students from fall semester. This exhibit closes on January 19th so don't miss it! The gallery is free and open to the public.

Mon–Fri | 8 am–noon & 1 pm–5 pm Downtown Campus (22 North Sierra Madre)

GLOBAL VILLAGE

Global Village is a community conversation round table, open to all, that focuses on bringing people together through discussions of world and personal issues, with a focus on our part in self and world betterment.

Mondays | 12:30 | Centennial Campus, The Grove
Tuesdays | 12:30 | Rampart Range, Atrium
Email Katherton2@student.cccs.edu or Martin.Conrad@pikespeak.edu for more details.



WAYFINDING LISTENING SESSIONS

See signage mockups and give input into what new signage and wayfinding will look like at PPSC. Join virtually via QR code.

Jan. 23 | 10–11:30 am | Rampart, E102
Jan. 23 | 1:30–3:00 pm | CHES, 109
Jan. 24 | 10–11:30 am | Downtown, S205
Jan. 24 | 1:30–3:00 pm | Centennial, A140
Jan. 26 | 11 am–12:30 pm | Zoom Meeting

FOLLOW US ON SOCIAL MEDIA

@PikesPeakEdu

